
How to install the SCSM 2012 R2 Self-Service Portal on Windows Server 2012/2012 R2

Problem statement:

The Service manager team announced support for SharePoint 2010 SP2. This support allows the installation of the Self-Service portal on Windows Server 2012/2012 R2.

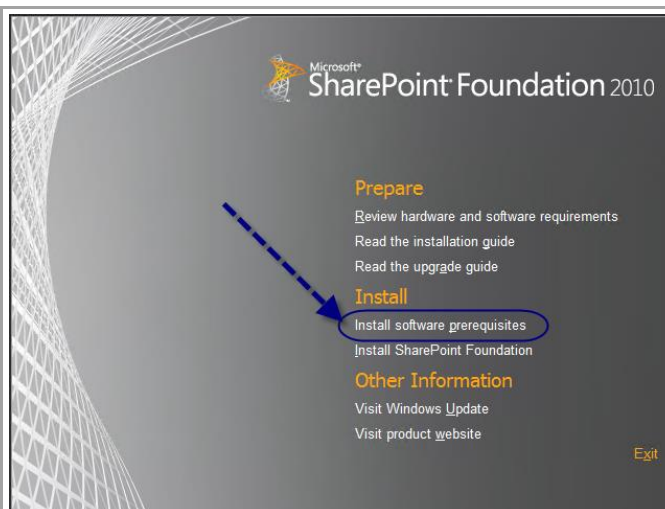
When you attempt to install SharePoint 2010 without SP2 on a Windows Server 2012/2012 R2 the installation is blocked. This is not the case when you use Windows Server 2008 R2 as you have the option to apply SP2 post installation.

Solution Summary:

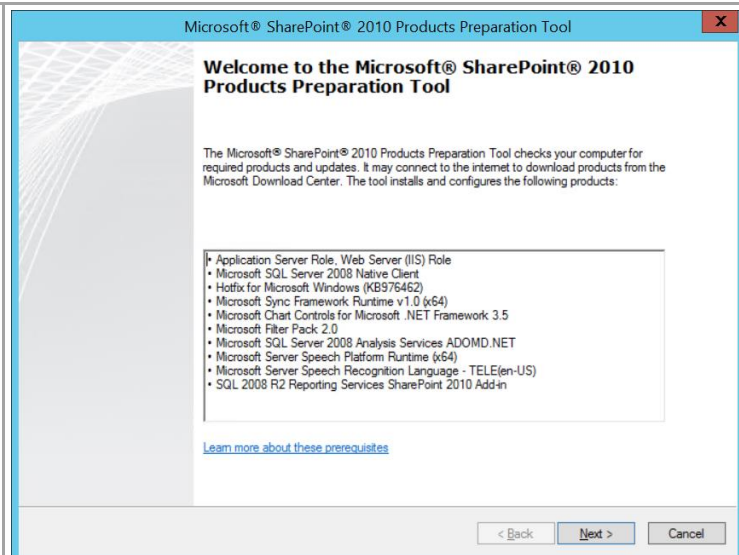
You must use a slipstreamed SP2 version of SharePoint 2010 media for installations on Server 2012/2012 R2. This is available as part of your volume license downloads or MSDN subscription download. You can use the free version of SharePoint (foundation edition).

- Download the slipstreamed SharePoint 2010 SP2. The link for the foundation edition is [here](#) (the file size is approximately 200MB).
- Install OS (server 2012 /2012 R2)
- Install SCSM Portal Prerequisites and perform Service Manager management server service account delegation
- Install SharePoint 2010 with SP2 slipstreamed
- Apply SP2 for SQL 2008 R2 Express if you installed SharePoint 2010 Foundation
- Install SCSM Self-Service Portal

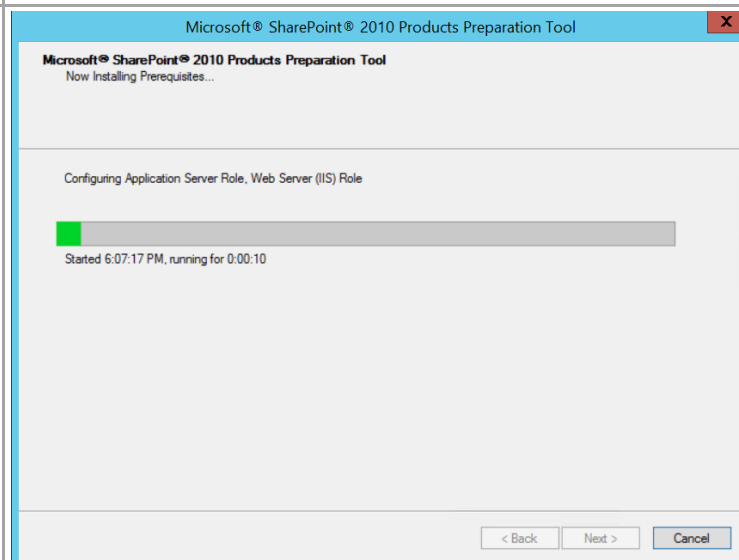
Install SharePoint prerequisites



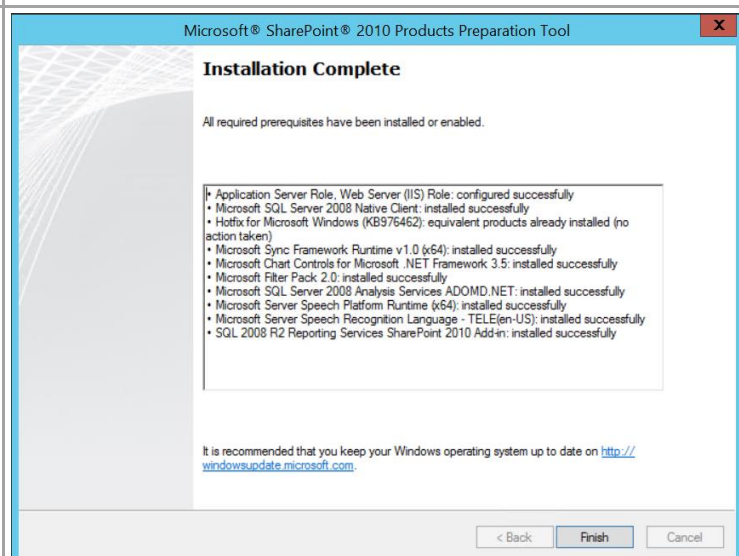
Click Next -> Accept the License terms on the next page and click Next



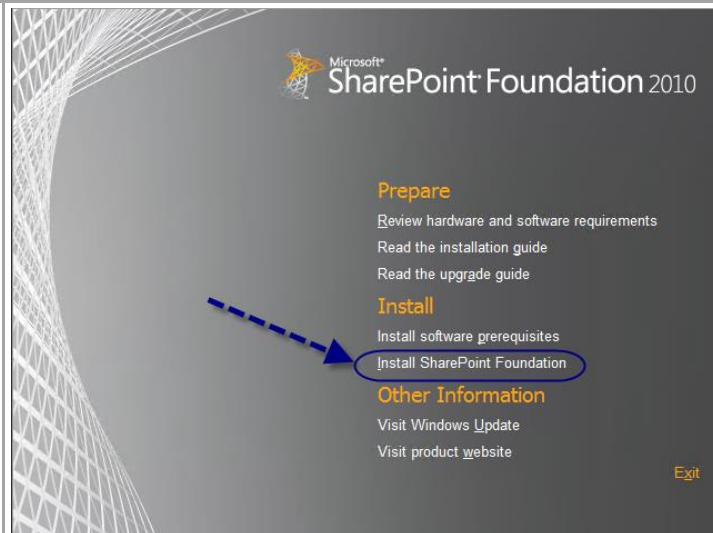
The Prerequisites are automatically installed



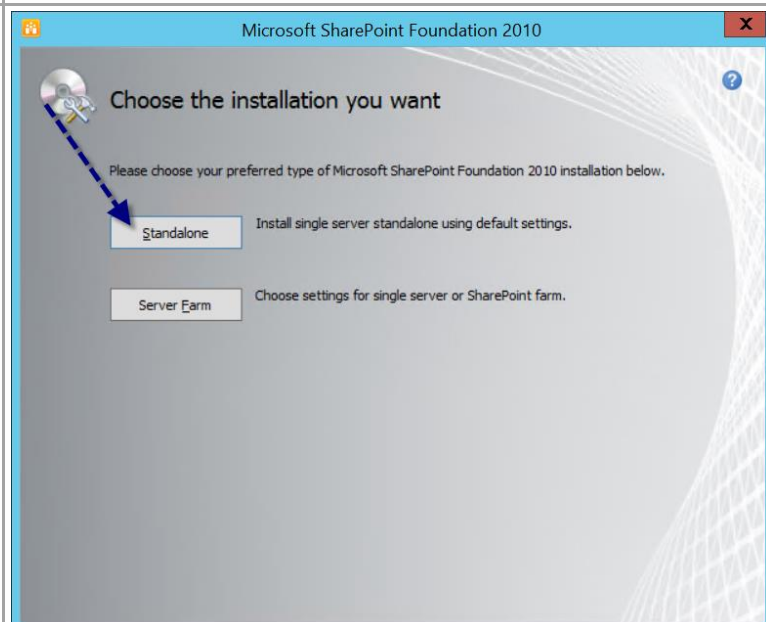
Verify all prerequisites are successfully installed and click finish



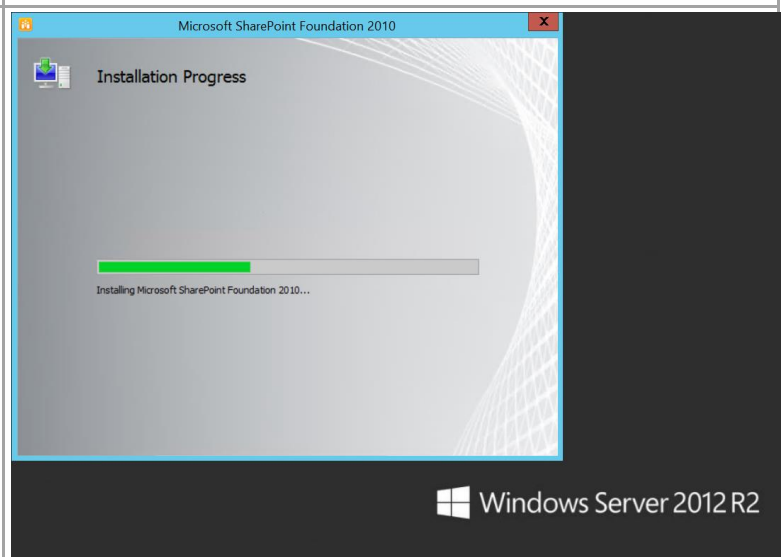
Install SharePoint Foundation ->
Read and accept the license terms
| Click continue



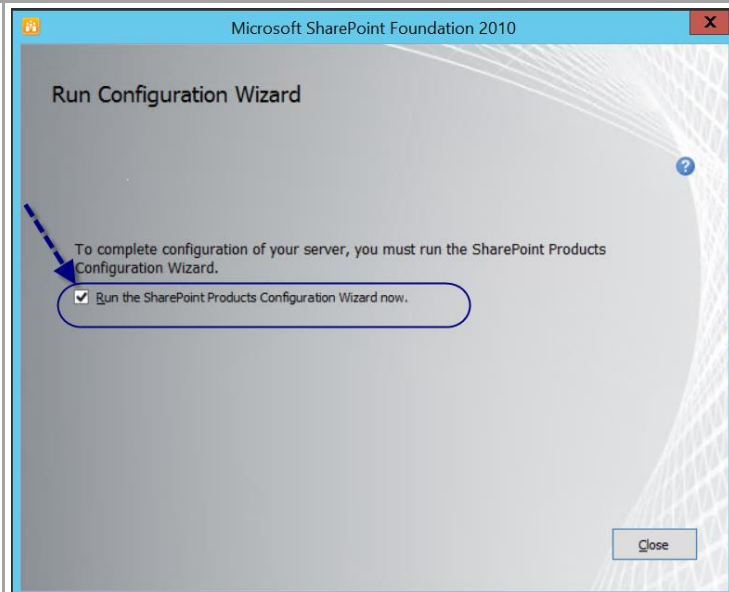
Click Standalone



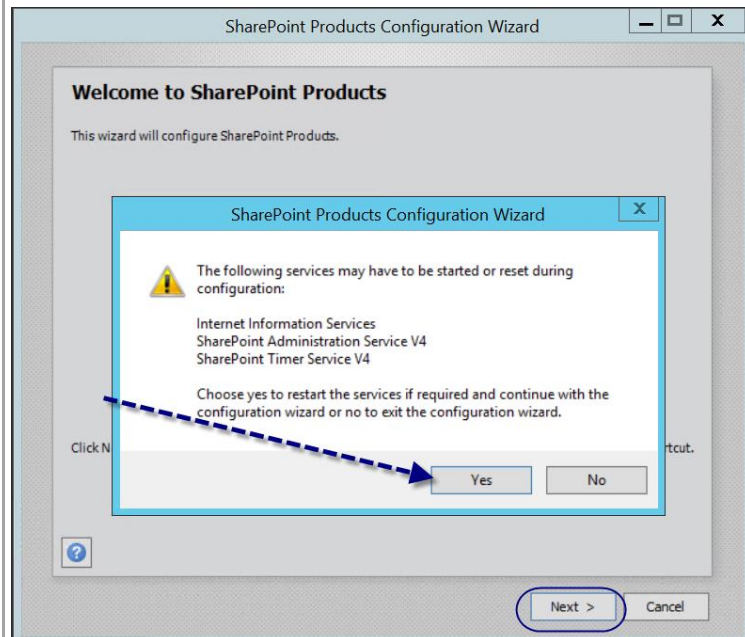
Installation starts



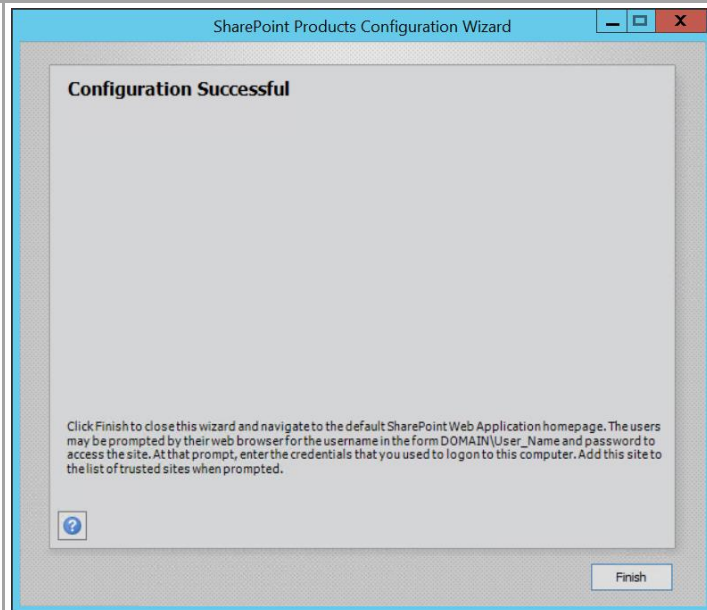
Ensure "Run the SharePoint Product Configuration Wizard now" is checked -> Click Close



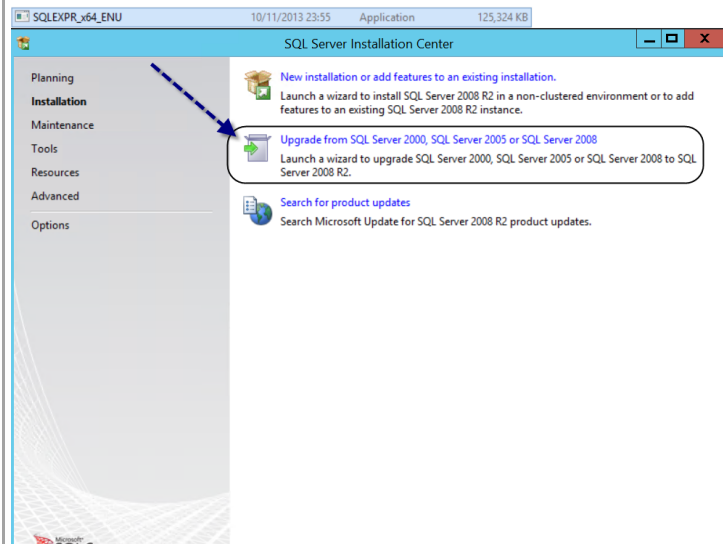
Click next to initiate the process -> Click Yes to acknowledge the services restart warning



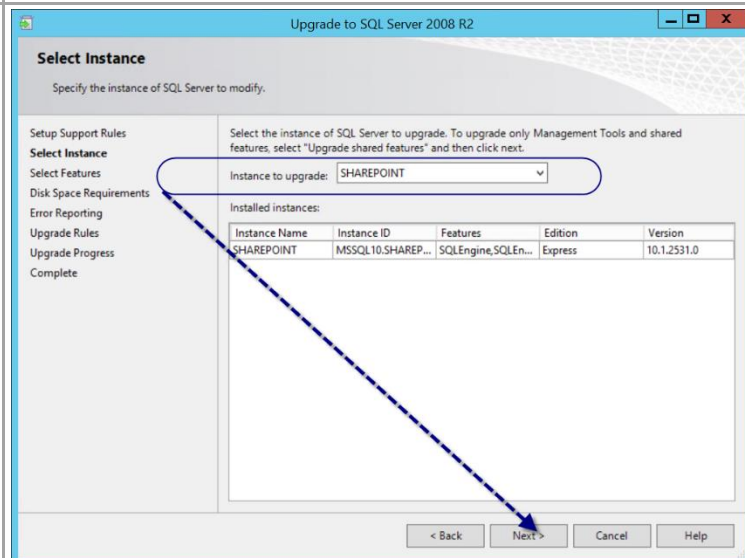
Confirmation



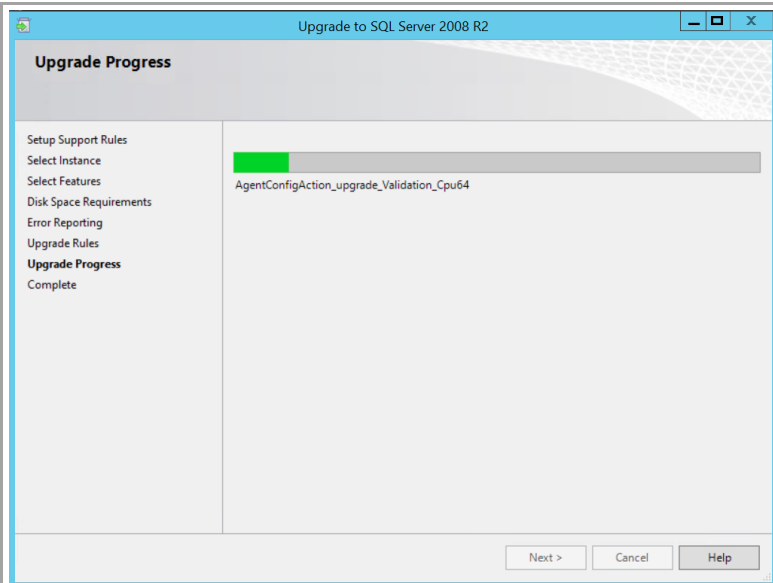
Apply SQL express 2008 R2 SP2 to the SharePoint foundation SQL Instance -> Accept the License Agreement and click Next



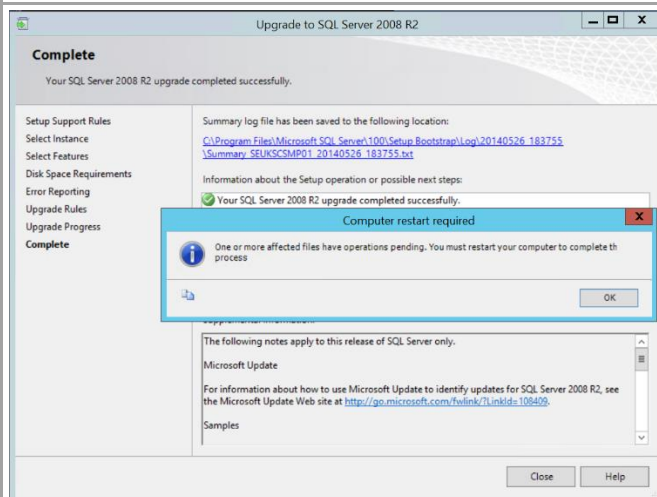
After the Initial setup files check process click Next | Verify the SharePoint Instance is detected for upgrade and click Next



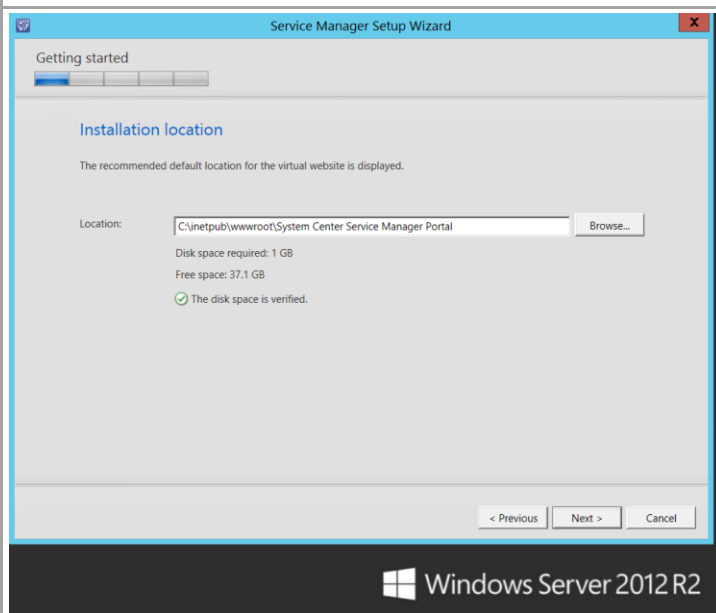
Make your selection on the Error reporting page and Click Next



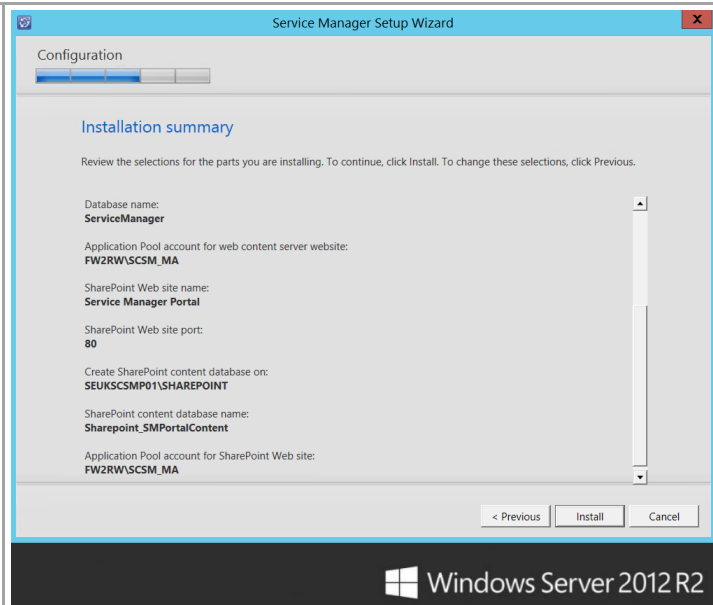
Click OK | Close and OK to Restart the Server



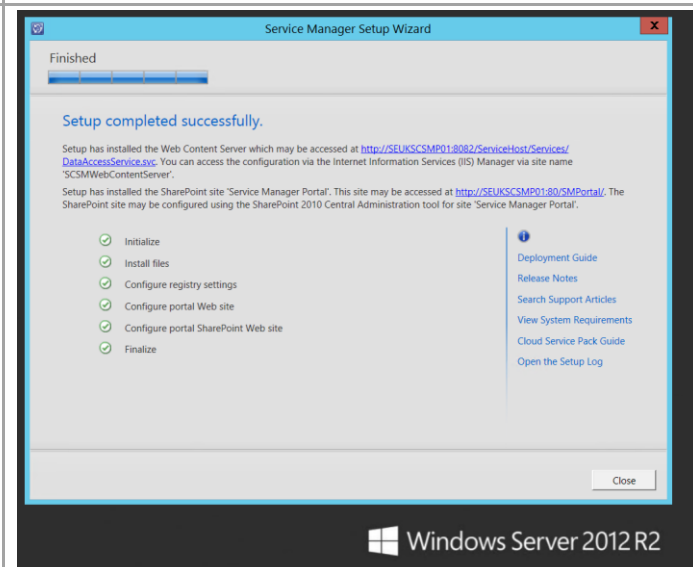
Install the SCSM 2012 R2 Portal | Provide the wizard require information. See Link to SCSM Deployment



Verify Installation options and click install



Confirmation



Validation

